

# witt

## Smoothie blender



Model: WTG250

### Instructions for how to use and operate/EN

**Please note:**

The picture is only for illustration purposes. The product design may change without further notice. The contents of this manually have been thoroughly reviewed. We accept no liability for printing errors.

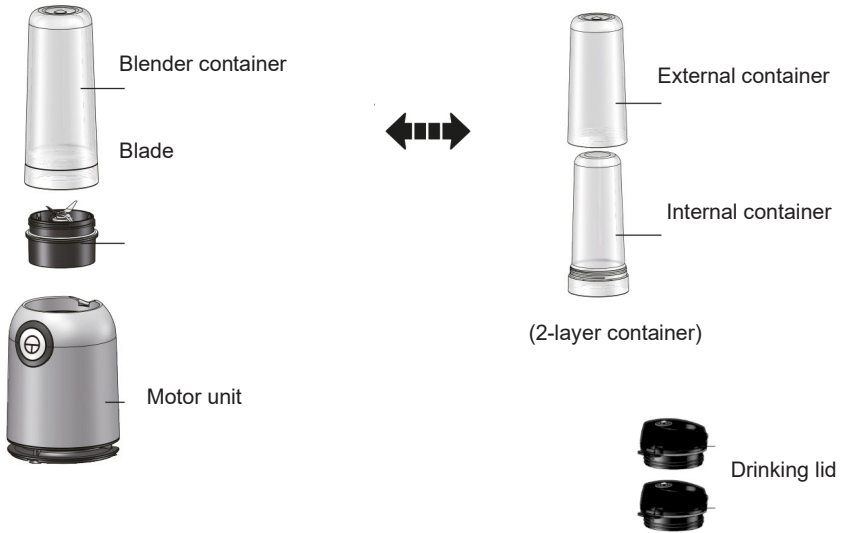
# CONTENTS

---

COMPONENTS .....	3
The blender container .....	3
HOW TO OPERATE .....	4
IMPORTANT SAFETY MEASURES .....	5
Cleaning and storage .....	7
Technical specifications .....	8
Warranty and Service .....	9

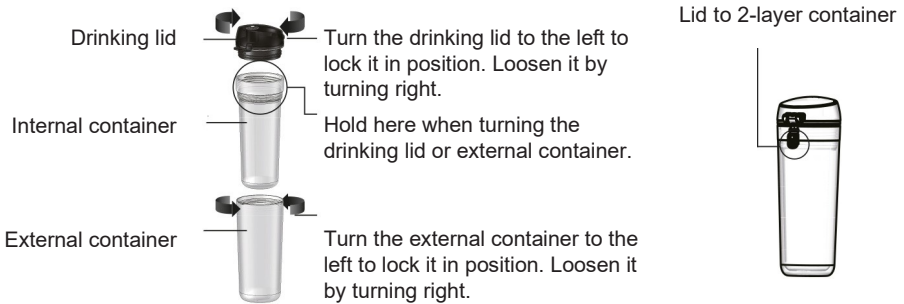
# COMPONENTS

---



## The blender container

---



# HOW TO OPERATE

---

01. Place the blender container on an even surface and have the opening face upwards. Fill the container with your favourite ingredients. Do not fill it up past the **MAX mark**.

MAX 450ML



02. Attach the blade unit to the blender container.
03. Turn the blender container upside down and attach it vertically to the motor unit. Ensure that it clicks properly into place in the little indentation.

## Safety button

The blender will stop when you release the button.

04. When the device has been running for 1 minute, it needs to cool down for another minute.



05. Turn the blender container around and place it on an even surface. Replace the blade unit with the drinking lid. Take the container with you as you go about your day.



# IMPORTANT SAFETY MEASURES

---

General safety measures to take when using electronic devices:

## READ ALL INSTRUCTIONS BEFORE USING THE DEVICE

- Unplug the device to cut power.
- In order to avoid electric shocks, neither the cord nor device may ever be lowered into water or other fluids.
- Never let the cord hang over the edge of the table or touch hot surfaces.
- Never let the device run unsupervised.
- Keep an eye on children when the device is used near them.
- Avoid touching rotating parts. Keep hands and tools away from the blender container when it is in use to prevent damage to the device or personal injuries.
- The knife blades are sharp, so be careful.
- Never use the blades on the motor unit before the blender container has been firmly attached.
- Do not attempt to modify the device in any way.
- Do not blend hot fluids.
- Do not use the device if the cord or plug are damaged or if the device is not working like it should. Stop using the device immediately and contact the store you bought the device from if you need replacement parts or repairs.
- Not for outdoors or commercial use - the device is only intended for household use.
- Always operate the device on an even surface.
- Unplug the device when the blender is not in use and before adding or removing parts or cleaning it.
- Never use the device for anything other than the purpose it is intended for. Using accessories that are not manufactured specifically for this device may pose a fire risk, cause electric shocks or lead to a damaged product or personal injuries.
- THIS DEVICE IS ONLY FOR HOUSEHOLD USE.

## The cord

---

- The device comes with a Schuko plug installed. As a consumer, you need to ensure that the device is grounded. If a Schuko plug does not ground the product with your socket, you can buy an adapter.
- You can use an extension cord, but only under the following conditions:
  - The extension cord may not hang out over the edge of the table and it must be outside the reach of children. The extension cord must be placed so that one does not trip over it.
  - Do not pull or twist the cord.

This device comes with a safety feature that acts to prevent the motor from overheating. If the device unexpectedly shuts down, unplug it and let the device cool down for at least 15 minutes before using it again.

TIP: Wash the container after you have consumed the contents and use it the whole day for water or other cold drinks.

Please note: For maximum efficiency, add contents to the blender in the following order: fluids, fresh ingredients, frozen fruit, yoghurt and ice.

SAVE THESE INSTRUCTIONS

## Tips for using the blender

---

- Add fluids to the container first unless a recipe specifically says otherwise.
- Cut the fruits and vegetables into sizes of 1.8 cm - 2.5 cm.
- Do not overfill the container. If the motor stops, immediately turn off the device, unplug it and let it cool down for at least 15 minutes. Then remove some of the food and continue blending.
- The device is not suitable for making mashed potatoes, whisking egg whites or crushing muesli toppings, kneading dough or blending raw meat.

---

## Cleaning and storage

---

**IMPORTANT: UNPLUG THE DEVICE BEFORE CLEANING IT. NEVER LOWER THE MOTOR UNIT INTO WATER OR OTHER FLUIDS.**

Use a moist, damp sponge with a mild dishwashing soap to clean the exterior of the motor unit. All parts, except the motor unit, can be put in the dishwasher.

You can also wash all parts, except the motor unit, in warm soapy water. Rinse and dry thoroughly after washing.

After cleaning, re-attach the blade unit to the blender container and attach it firmly to the motor unit.

## Technical specifications

---

Product name	Blender
Product number	NB250
Voltage	220~240V
Nominal effect	250W
Frequency	50/60Hz
Speed (rpm)	19000~23000



## WARRANTY AND SERVICE

There is a 2-year warranty period if your new product stops working due to manufacturing or material faults which begins from the documented date of purchase. The warranty covers materials and the cost of labour. When inquiring about service, please state the product name and serial number. You can find this information on the type plate. You can write down the information here in these instructions so that you have them at hand. This makes it easier for the service technician to find the correct spare parts.

### **The warranty does not cover:**

- Faults and damage that are not due to manufacturing or material issues
- Damage caused by failure to properly maintain the device - including failing to clean it
- Fire and/or water damage or moisture damage on the product
- Damage caused during transport if the product was transported without proper packaging
- Damage caused by the use of unoriginal spare parts
- Damage resulting from failing to follow the instructions on how to use the device
- If the device has not been set up/assembled as specified in the instructions
- If non-professionals have installed or repaired the product
- Batteries or any other parts subject to normal wear and tear

### **Damage during transport**

If the product is damaged during transport and this is discovered when the retailer delivers the product to the customer, this is exclusively a matter between the customer and the retailer. In cases where customers have handled the transport of the product themselves, the supplier shall not be liable for any potential damage during transport. Any damage caused during transport must be reported immediately and no later than 24 hours after the product has been delivered. If not, the customer's claim will be rejected.

### **Unnecessary service**

If the product is sent in to be serviced and it turns out that the fault could have been fixed independently by following the product's instruction manual, the customer will need to pay the service fee.

### **Commercial purchases**

Commercial purchases are all purchases of devices that are not

intended to be used in private households but instead intended to be used for commercial purposes (in restaurants, cafés, canteens, etc.) or intended to be rented out or otherwise used by multiple users in turn.

There is no warranty offered for commercial purchases, as this product is only intended for regular household use.

## **Service**

For service and spare parts in England and Ireland please call below-mentioned number and you will be directed accordingly or send us an email.

Witt UK & Ireland Ltd.

(44) 148 351 6633 / [info@witt.dk](mailto:info@witt.dk)

We accept no liability for printing errors.

The manufacturer/distributor cannot be held liable for damage to products or individuals if the safety instructions were not followed. The warranty shall not cover cases where the instructions have not been followed.



